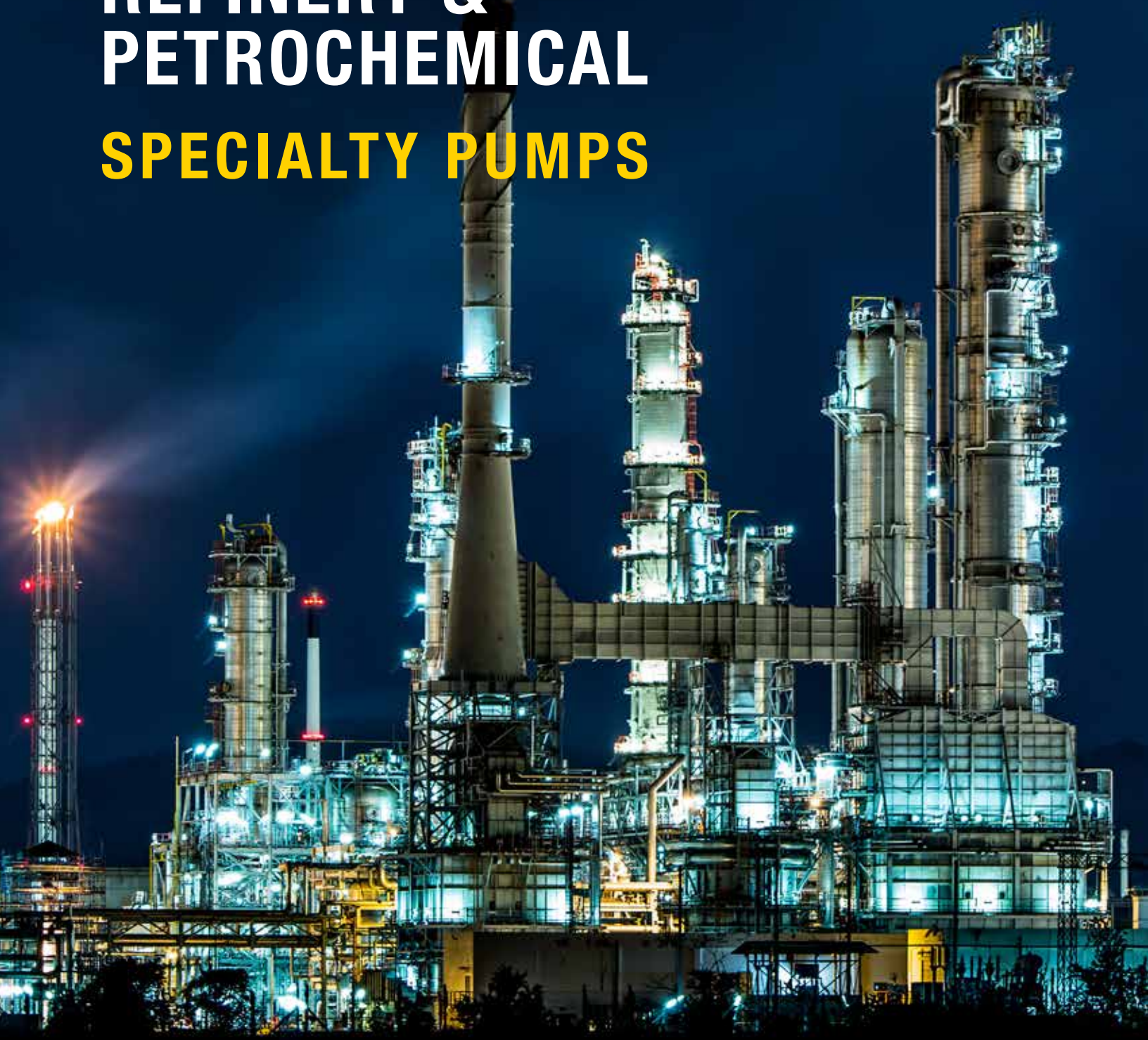


# REFINERY & PETROCHEMICAL SPECIALTY PUMPS







## PETROCHEMICAL & REFINERY SOLUTIONS

- Boiler Water Feed Pumps
- Multi-stage Centrifugal Pumps
- Fire Suppression Pumps
- Cooling Tower Supply Pumps
- Fluid Transfer Pumps
- Tank Cleaning Pumps
- Pipeline Fill and Test Pumps

### Triplex Piston Pump



<b>Model</b>	EWS RS440 High Pressure Pump
<b>Horsepower</b>	440 HP
<b>Max Flow</b>	397 GPM @ 2500 PSI
<b>Max Pressures</b>	2500 PSI TDH/1080 FT
<b>Max Temperature</b>	190°F / 87°C

### 5 Speed Triplex Pump



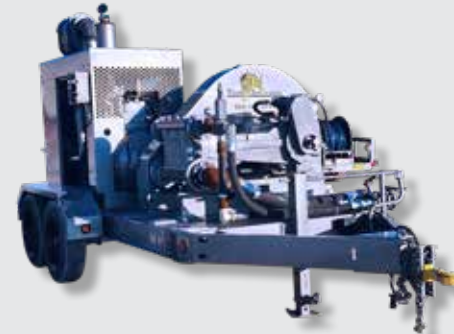
<b>Model</b>	FMC Bean Pump
<b>Horsepower</b>	128 HP
<b>Max Flow</b>	46.6 GPM @ 2500 PSI
<b>Max Pressure</b>	2500 PSI TDH/1080 FT
<b>Max Temperature</b>	140°F / 60°C

### High-Head Centrifugal Pump



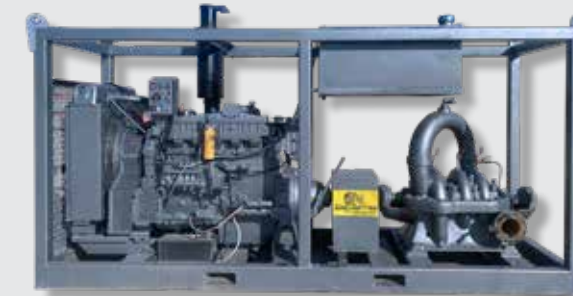
<b>Model</b>	Cornell 4622MX Centrifugal Pump
<b>Horsepower</b>	325 HP
<b>Max Flow</b>	1650 GPM @ 200 PSI/460FT TDH
<b>Max Pressure</b>	270 PSI TDH/623 FT @ 200 GPM
<b>Max Temperature</b>	180°F / 82°C

### FMC Triplex Pump



<b>Model</b>	FMC 1636DI Bean Pump
<b>Horsepower</b>	325 HP
<b>Max Flow</b>	300 GPM @ 300 PSI
<b>Max Pressure</b>	300 PSI TDH/693 FT
<b>Max Temperature</b>	160°F / 71°C

### Three Stage Centrifugal Pump



<b>Model</b>	5TUT-16 Three Stage Fill Pump
<b>Horsepower</b>	425 HP
<b>Max Flow</b>	1,400 GPM @ 720FT TDH/311 PSI
<b>Max Pressure</b>	400 PSI TDH/924FT @ 500 GPM
<b>Max Temperature</b>	290°F / 144°C

### Medium-Head Centrifugal Pump



<b>Model</b>	6NHTB Centrifugal Pump
<b>Horsepower</b>	300 HP
<b>Max Flow</b>	5400 GPM @ 65 PSI/150FT TDH
<b>Max Pressure</b>	130 PSI TDH/300FT @ 1400 GPM
<b>Max Temperature</b>	180°F / 82°C

### FMC Triplex Pump



<b>Model</b>	FMC 1624DI Bean Pump
<b>Horsepower</b>	325 HP
<b>Max Flow</b>	150 GPM @ 1400 PSI
<b>Max Pressure</b>	1400 PSI TDH/3234 FT
<b>Max Temperature</b>	160°F / 71°C

### High-Volume High-Head Centrifugal Pump



<b>Model</b>	Cornell 6822MX Centrifugal Pump
<b>Horsepower</b>	325 HP
<b>Max Flow</b>	4500 GPM @ 233 PSI TDH/550FT
<b>Max Pressure</b>	285 PSI TDH/658FT @ 1000 GPM
<b>Max Temperature</b>	180°F / 82°C

### Low-Volume High-Head Centrifugal Pump



<b>Model</b>	Cornell 3617MXVA Centrifugal Pump
<b>Horsepower</b>	173 HP
<b>Max Flow</b>	900 GPM @ 216 PSI TDH/500FT
<b>Max Pressure</b>	233 PSI TDH/538FT @ 400 GPM
<b>Max Temperature</b>	180°F / 82°C





**BATON ROUGE, LA**

35269 Carson Drive  
Geismar, LA 70734

**BEAUMONT, TX**

1313 Gulf Street  
Beaumont, TX 77701

**HOUSTON, TX**

12803 Highway 225  
La Porte, TX 77571

**VICTORIA, TX**

11901 US Highway 59 North  
Victoria, TX 77905

**CORPUS CHRISTI, TX**

8283 Leopard St  
Corpus Christi, TX 78409

**DILLEY, TX**

12350 S IH 35  
Dilley, TX 78017

**MIDLAND, TX**

7701 West Industrial  
Midland, TX 79706



[TigerIndustrialRentals.com](http://TigerIndustrialRentals.com)

24/7: 1-888-866-0047